

Sembcorp Myingyan Power Company Limited

Corporate Social Responsibilities Updates
December 2022



Objective

The purpose of today is to:

- Introduction
- Operational Updates
- Environmental and Social Updates
- Grievance Committees

Who are we? (1/2)

- Sembcorp Industries is a leading renewable, energy and water group with operations across 11 Countries in worldwide.

1. Myanmar
2. UAE
3. Oman
4. China
5. India
6. United Kingdom
7. Bangladesh
8. Vietnam
9. Singapore
10. Indonesia

Sustainability is Our Business

A Leading Pan-Asian Provider of Sustainable Solutions

Sembcorp is a leading energy and urban solutions provider, driven by a purpose to do good and play our part in building a sustainable future.

-  Balanced energy portfolio of 16.6GW of power worldwide
-  7.1GW of gross renewable energy capacity globally, in operation and under development
-  Operating one of the largest energy storage portfolios in the UK
-  Leading wind energy player with largest self O&M in India
-  Portfolio of private sector-led and government-supported projects spanning over 13,000 hectares across Asia
-  Operating the largest inland floating solar farm in Singapore



Who are we? (2/2)

- Sembcorp has a balanced energy portfolio of 16.6GW, with 7.1GW of renewable energy capacity comprising solar, wind and energy storage globally.
- Myingyan IPP is the first international project financed Independent Power Producer (IPP) Project in Myanmar and is 100% owned by Sembcorp Myingyan Power Company Limited



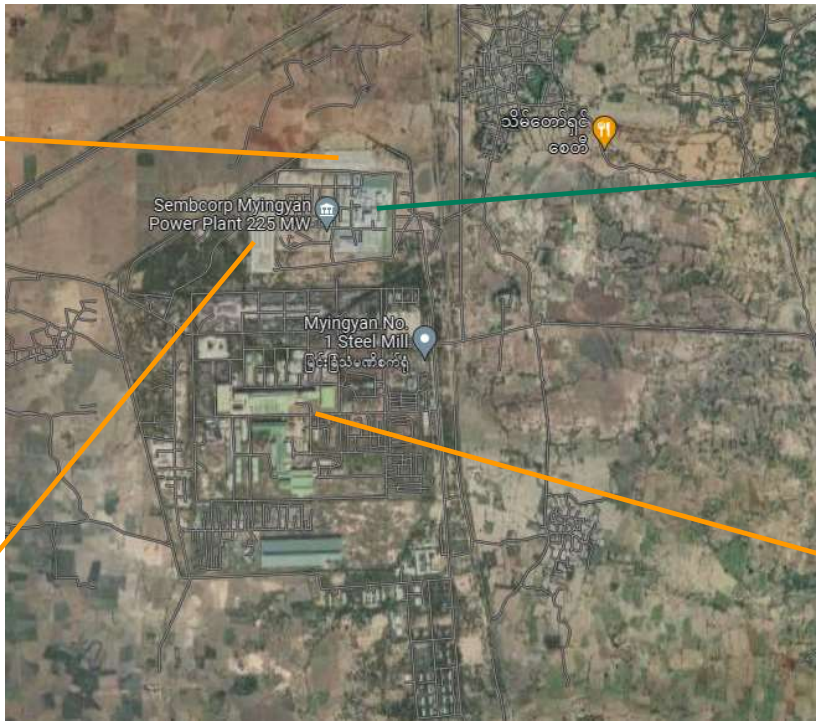
Plant Location



▪ V Power 90 MW



▪ V Power 67 MW



Sembcorp Myingyan IPP



▪ No.1 Steel Mill, Myingyan

Project Facilities Overview



230 kV Transmission Tower



225MW CCGT



River Barge



6.6kV Overhead Transmission Line



Water Pipeline (Intake & Discharge)

Our role in Myanmar (1/2)

Sembcorp Myingyan Power Company Limited has been selected by the Ministry of Electric Power - MOEP (former known MOEE) in 2015 to develop a 225MW Combined Cycle Gas Turbine (CCGT) power plant in Myingyan Township.

The plant started Phase 1 commercial operation started on 7 May 2018 and full commercial operations started on 2 Oct 2018.



The report on environment and social impacts has been undertaken by experts to understand potential environmental and social impacts and opportunities in accordance with national and international standards. Our ESIA has been approved by the Ministry of Natural Resources and Environmental Conservation (MONREC).

Our role in Myanmar (2/2)

- Sembcorp Myingyan IPP is a landmark Power Plant in Myanmar. Myingyan 225 MW Combine Cycle Power Plant is one of the largest and the most efficient Power Plant.



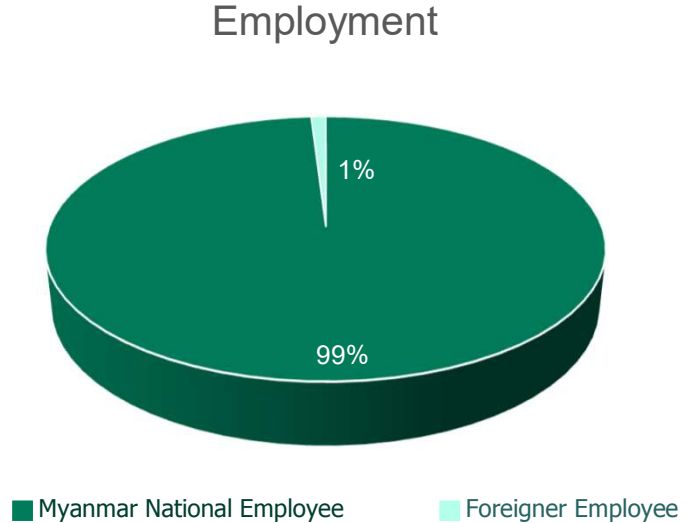
- We are the first Power Plant in Myanmar which generate enough renewable energy to the power entire Admin Building and Warehouse by Solar Panel.



Job Opportunity

- As of 31 July 2022, Sembcorp Myingyan Power Company

99 % Myanmar National Employees.



Environmental Management Plan

- Currently in the Operational Phase, the company continuously monitoring environmental impact of the community according to government guideline.
- Year 2022 our environmental monitoring plan as below

Serviced by;	Category	Jan	Feb	Mar	Apr	May	Jun	Jul	Aug	Sep	Oct	Nov	Dec
3rd party	Ambient Air Quality & Noise			Done			Done			Done			Plan
	Soil Quality						Done						Plan
	Surface Water Quality			Done			Done			Done			Plan
Plant Internal	Surface Water Quality	Done	Done	Done	Done	Done	Done	Done	Done	Done	Done	Plan	Plan

Plan Done

Updated as of 31 Oct 2022

Environmental Management Plan

A. Air Quality Management



B. Noise Monitoring



C. Waste Management



D. Wastewater Management



Environmental Management Plan

(A) Air Quality Management (1/2)

We have mechanisms to reduce and monitor our emissions to ensure it is in line with the Ministry of Natural Resources and Environmental Conservation (MONREC).

- ❖ Two air emission stacks – main and by-pass stacks of 40m and 30m height respectively were constructed to disperse air pollutants such that the ground level concentration of air pollutants do not exceed the relevant MONREC standard.
- ❖ Built-in dry low NO_x burners reduce NO_x emission at stack to below 25ppm at all times
- ❖ Continuous Emission Monitoring System (CEMS) installed on BOTH GT Bypass Stack & Boiler Outlet Stack
- ❖ Ambient air quality around the Plant area monitored as per the Environment Monitoring Programmer formulated for the Plant



Environmental Management Plan

(A) Air Quality Management (2/2)

Ambient Air Quality

Parameters	third party monitoring resultson Jun 2022				MONREC Guideline	World Bank Guideline	Unit	Rating
	ASR 4	ASR 3	ASR 5	ASR 14				
PM ₁₀	3.04	4.73	4.11	3.93	-	50	µg/m ³	Compliance
PM _{2.5}	1.62	2.49	2.14	2.12	-	25	µg/m ³	Compliance
*CO	0.00031`	0.00018	0.00014	0.0001	-	9	ppm	Compliance
CO ₂	416.99	426.57	424.9	425.78	-	5000	ppm	Compliance
SO ₂	0.11	0.15	0.13	0.14	20	20	µg/m ³	Compliance
NO ₂	9.78	22.31	12.97	25.41	200	200	ug/m ³	Compliance

Noise monitoring

Monitoring points	Day	Night	MONREC Guideline	World Bank Guideline	Unit	Rating
Sembcorp Myingyan Power Plant	54.48	50.19	70	70	dBA	Compliance

*MONREC emission guidelines 2015

Environmental Management Plan

(B) Regular Noise Monitoring (inside & outside the plant)

- ❖ Noise quality around the Plant area monitored as per the Environment Monitoring Programme formulated for the Plant
- ❖ Noise inside the plant area also monitored by HSSE Team



Environmental Management Plan

(C) Waste Management (1/2)

- ❖ Domestic waste generated by the operations workforce (including paper, plastics and putrescible wastes) as well as waste materials such as steel, excess cables etc. associated with routine and non-routine maintenance will be stored and disposed by an authorized collector.
- ❖ Both Hazardous and Non-hazardous waste will be collected & disposed by a Myingyan City Development Committee (MCDC)-approved contractor.
- ❖ Medical waste is incinerated in the Myingyan Hospital compound.



Environmental Management Plan

(C) Waste Management (2/2)



**Sludge are disposed to the designated area.

Environmental Management Plan

(D) Wastewater Management (1/2)

- ❖ Liquid effluents from operations are treated to meet the MONREC guideline prior to discharge. The sewage from the entire plant area are collected and treated in a Sewage Treatment Plant (STP).
- ❖ Regular monitoring of wastewater quality are conducted by internal & external parties.
- ❖ Online sensors installed at Central Monitoring Basin for PH, Turbidity & Chlorine.



Environmental Management Plan

(D) Wastewater Management (2/2)

- ❖ Wastewater collected from canteen kitchens, including that from basins, sinks and floor drains, are discharged into sanitary sewers via grease traps.
- ❖ Regular monitoring of wastewater quality are conducted by internal team at lab and discharged points.



Health & Hygiene Management (1/2)

- ❖ Yearly Audiometric Test for all staff



Health & Hygiene Management (2/2)

- ❖ Voluntary Covid-19 vaccination provided for all employees and contractors



Our Community – 13 Villages

Myingyan Township
9 Villages

Taung Thar Township
4 Villages

- Sarkhaar 0.3 mile
- Theim 1.8 mile
- Gyoke Pin 1.9 mile
- Hta Naung Tai 3.8 mile
- Ma Yoe Kone 6.2 mile
- Tha Pyay Thar 6.6 mile
- Sate Nyan 6.3 mile
- Ka Lane Chone 5.7 mile
- Kyun U 6.1 mile

- Hnan 1.1 mile
- Phet Taw 2.2 mile
- Nyaung Kan 2.3 mile
- Aye 5.8 mile



Corporate Social Responsibility

- Educational Support
- Community Health Awareness and Health Care Facilities
- Enhance Access to Ground Water
- Improve Community Infrastructure
- Support Social Welfare and Youth Development
- Only based on genuine needs
(e.g., flood relief, COVID-19 Support, etc..)

Corporate Social Responsibility

Educational Support

- Providing Educational Infrastructure: School Classroom, School Elevated Water Tank, School Compound Fence – Brick Wall, Teacher Lounge, Teacher Quarter, etc..



Corporate Social Responsibility

Community Health Awareness and Health Care Facilities



Year 2022 Community Health Awareness Program



Clinic Building with Furniture

Corporate Social Responsibility

Enhance Access to Ground Water Water Treatment Plants Maintenance – Replace Material and Deep Cleaning 14 units of Water Treatment Plants



Corporate Social Responsibility

Improving Livelihood Skill

- Basic Tailoring and Designer Training



Corporate Social Responsibility

COVID-19 Support (1/2)

- Year 2020
 - Medical equipment for Hospitals
 - Pump Syringe
 - Global Pump Mid Press
 - Infrared Thermometer
 - Surgical Glove
 - Surgical Mask
 - Pesticide Sprayer with Motor
 - Supporting Equipment for Hospitals
 - Generator 30kVA
 - Generator 100kVA
 - Oxygen concentrators with accessories
 - Reusable Mask for Community



Corporate Social Responsibility

COVID-19 Support (2/2)

- Year 2021
 - Supporting Equipment for Hospitals
 - Oxygen concentrators with accessories
 - Oxygen cylinders with accessories
 - Color ultrasound
 - 3 channels ECG
 - Supporting Equipment for Oxygen Plant
 - Generator 100kVA

Corporate Social Responsibility

Stakeholder Engagement

- Public stakeholder meetings to be continued in annual basis



Corporate Social Responsibility

Stakeholder Engagement

- Engagement will continue throughout the entire lifecycle of the Project.



Corporate Social Responsibility

Grievance Management

A Grievance Mechanism has been established to address suggestions submitted by affected individuals

- Available for anyone to report
- If you have any suggestion for improvement, issue or concerns, Sembcorp is happy to listen to them.
- Please submit your feedbacks in the suggestion box nearest to your village or contact Sembcorp Staff directly. Kindly see contact details on the suggestion box.
- Your village representative is also part of grievance committee.



Corporate Social Responsibility

Grievance Management

Grievance Committee

1. Village Representative
2. EPGE – Government
3. Government Affairs Manager (SMPC)
4. Plant Manager (SMPC)
5. HR & Admin Manager (SMPC)
6. HSSE Manager (SMPC)
7. Community Relation Team
8. Group Strategic Communications & Sustainability – Singapore (Optional)
9. Township Administrator (Optional)